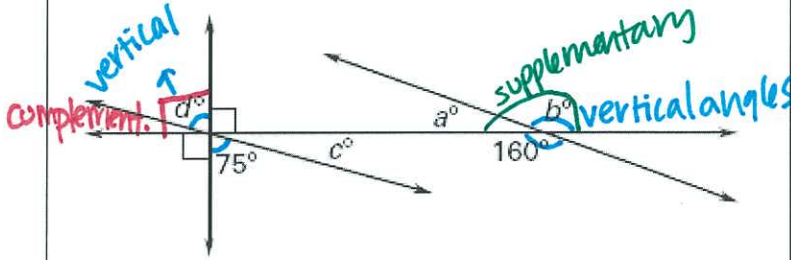


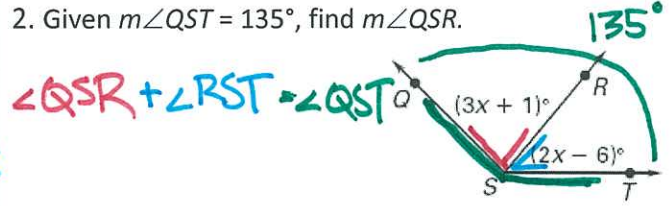
Supplementary = 180
Complementary = 90
Vertical angles are congruent!

Name: _____ TP: _____

1. Use the diagram below to find the measure of a° , b° , c° and d° .

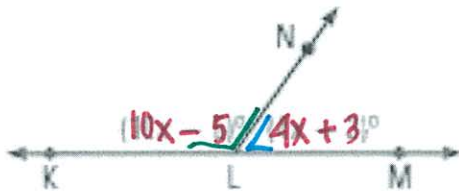


2. Given $m\angle QST = 135^\circ$, find $m\angle QSR$.



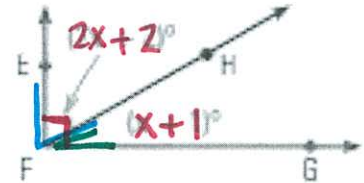
3. Find $\angle KLN$ and $\angle MLN$.

$\angle KLN + \angle MLN = \underline{\hspace{2cm}}$ (supplementary)



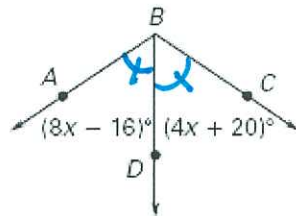
4. Find $\angle EFH$ and $\angle HFG$.

$\angle EFH + \angle HFG = \underline{\hspace{2cm}}$ (complementary)



5. BD bisects $\angle ABC$. Find $m\angle ABC$.

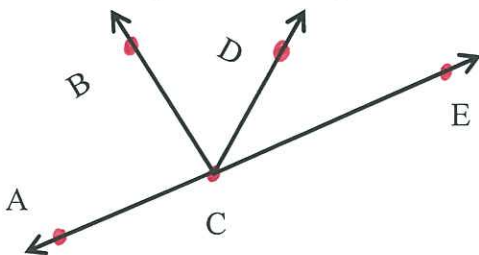
*Bisects means to cut in HALF



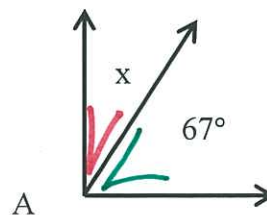
6. Draw an angle that fits the description:

- a. acute
- b. obtuse
- c. straight
- d. right

7. Name all the angles in the diagram



8. If $m\angle A = 90^\circ$ find x .



$x + 67 = \underline{\hspace{2cm}}$ (complementary)

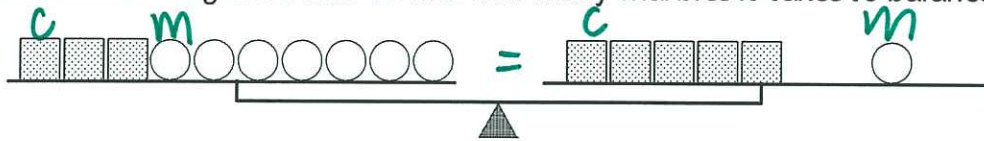
1. $\angle ACB$	2.	3.
4.	5.	6.

GRASP REVIEW!

(Mind the GAP with complete

sentences!)

Use the *balance diagram* below to find how many marbles it takes to balance one cube.



G

Goal

R

Required

A

Analysis

I will set up an equation with "c" representing cubes and "m" representing marbles. (You must set up the equation using the diagram of the balance above!)

_____ = _____

S

Solve

P

Paraphrase

In complete sentences, you must explain how you know that your answer is correct. Refer to the diagram at the top of the page.